

# Tri-Lase™ sandstone™

**Q-Switched Nd:YAG & Er:YAG laser**

Offer more to your clients with the three treatment choices available in this one, affordable unit.



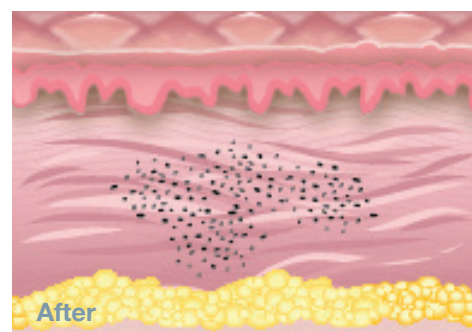
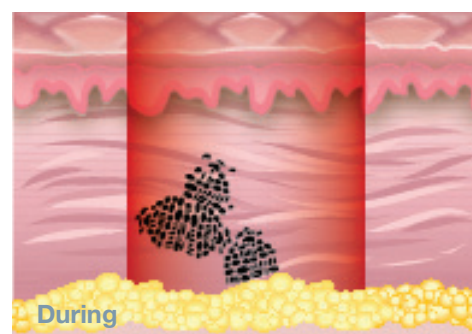
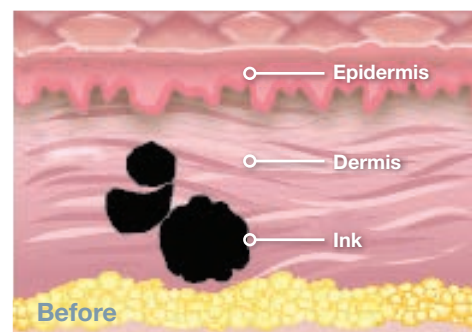
ellman®  
INTERNATIONAL, INC.

The Sandstone™ Tri-Lase™ offers Q-switched Nd:YAG (1064nm) and KTP (532nm), both at 10 nanosecond pulse width, as well as Er:YAG (2940nm) at a longer 300 microsecond pulse width.



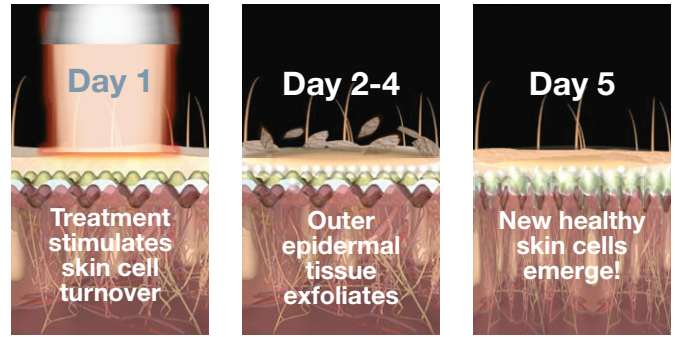
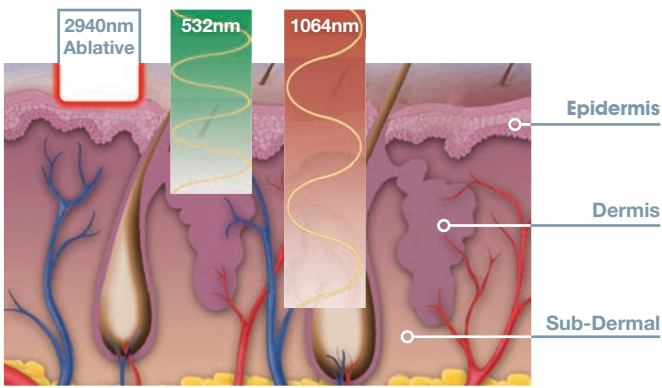
A smart, cost-effective investment, the Sandstone Tri-Lase provides you an opportunity to reach out to new clients via a tattoo removal capability and to offer your existing clients additional treatment options like superficial skin resurfacing and treatment of pigmented lesions. The result is increased revenue and an expanded practice.

### Tattoo Removal Treatment



“I have used the Tri-Lase for three years and it is a very good laser; its tattoo removal efficacy is just as good as the more expensive laser I had used before. The Tri-Lase is easy to move around and holds up well to wear and tear.”

— Richard Sabates, M.D.



## Q-Switched Nd:YAG & KTP

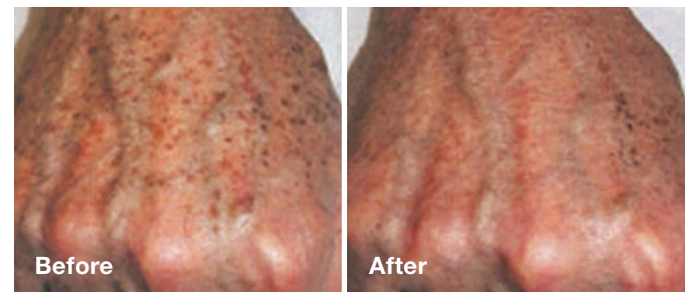
### CLINICAL USES

- Unwanted Tattoos (Including Permanent Makeup)
- Pigmented Lesions on Skin Types I-IV

## Erbium YAG

### CLINICAL USES

- Superficial Skin Resurfacing
- Fine Lines & Wrinkles
- Micro-Laser Peels



### Safe & Effective Photo-Acoustic Mechanism

The high peak power and short (10ns) pulse width of the energy delivered by the Sandstone™ Tri-Lase™ selectively fragments pigment in tattoo ink and superficial pigmented lesions to particles that are carried out of the body by its own immune system.

### Dual Wavelengths

Dual wavelengths allow more precise targeting of specific chromophores in tattoo ink including reds with the 532nm KTP, blacks greens, and blues with the 1064nm Nd:YAG. Uniform "top hat" beam profile delivers maximum energy to the target with minimal damage to collateral tissue.

### Flexible Delivery of Energy to Lightweight Ergonomic Handpiece

The lightweight ergonomic handpiece means less operator fatigue and less repositioning of the device to reach target areas.

### Intuitive Control Panel & Multiple Spot Sizes

These options provide effortless customization of treatment parameters to each client's individual situation. Spot sizes include 1.5, 3, and 4mm.

### Extended Ablation Technology

Slightly longer pulse durations facilitate excellent results in an easily controlled superficial resurfacing system. A low downtime alternative to chemical peels, from light fruit acids (AHA) to moderate effect TCA peels.

The Er:YAG wavelength (2940nm) can generally be used without anaesthesia and on areas of the body such as the back of the hands and peri-orbital areas that cannot be treated safely by many other resurfacing protocols.

### Flexible Delivery of Energy to Lightweight Ergonomic Handpiece

The lightweight ergonomic handpiece means less operator fatigue and less repositioning of the device to reach target areas.

### High Repetition Rates (Up to 10Hz) & Multiple Spot Sizes

High repetition rates allow faster treatments and quicker turnaround of the treatment room. The available spot sizes include 1, 3, and 6mm.

# How To Order

Contact us by phone or email to place an order with one of our customer service representatives.

**Order by Phone:** 800.835.5355 or 516.594.3333

**Order by Email:** [customerservice@ellman.com](mailto:customerservice@ellman.com)

Visit [ellman.com](http://ellman.com) to learn more about the Tri-Lase™ Q-Switched Nd:YAG and Er:YAG laser and Ellman International.



## Tri-Lase™

sandstone™

Q-Switched Nd:YAG & Er:YAG laser

### Tri-Lase Q-Switched Nd:YAG & Solid State Erbium YAG Laser Specifications

Modality	Q-Switched Nd:YAG & KTP	Er:YAG
Wavelength	1064nm & 532nm	2940nm
Spot Size	1.5, 3 & 4mm	1, 3 & 6mm
Fluence to Tissue	Up to 12 J/cm <sup>2</sup>	Up to 5 J/cm <sup>2</sup>
Peak Power	1,000 mJ	600mj
Repetition Rate	1–5 Hz	Up to 10 Hz
Pulse Width	10ns	300µs
Cooling System	Closed Loop	
Electrical	110/220VAC, 50/60Hz	
Dimensions	36cm x 43cm x 104cm	